

Emergency Evacuation Plan

Evacuation Plan



SIGNAL: LONG BELL RUNG

EVACUATION PROCEDURE

1

**WHEN ALARM SOUNDS,
LEAVE IMMEDIATELY BY THE
NEAREST EXIT.**

2

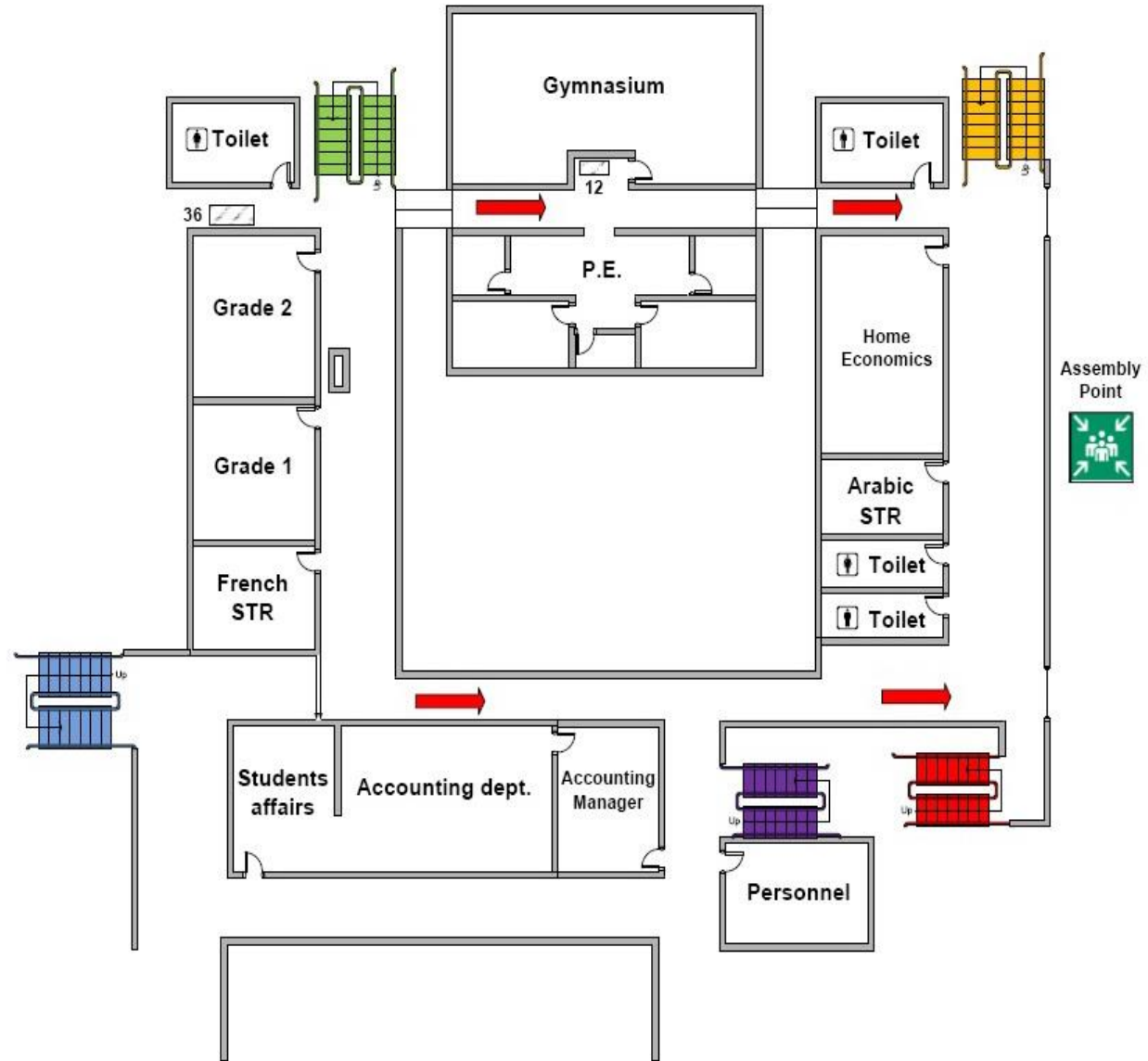
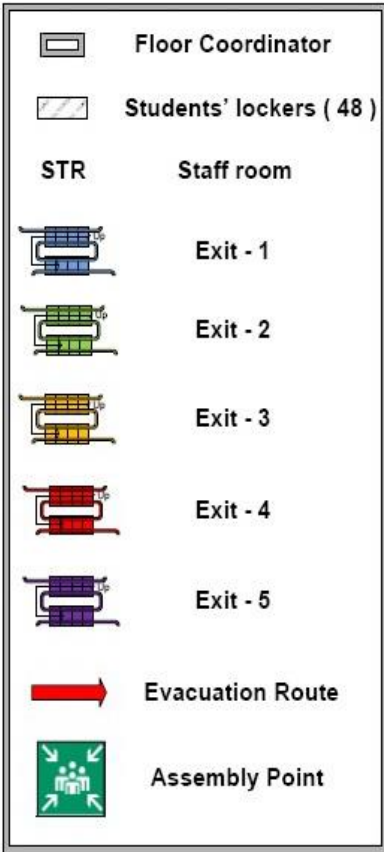
**PROCEED IN AN ORDERLY
MANNER TO ASSEMBLY POINT.**

3

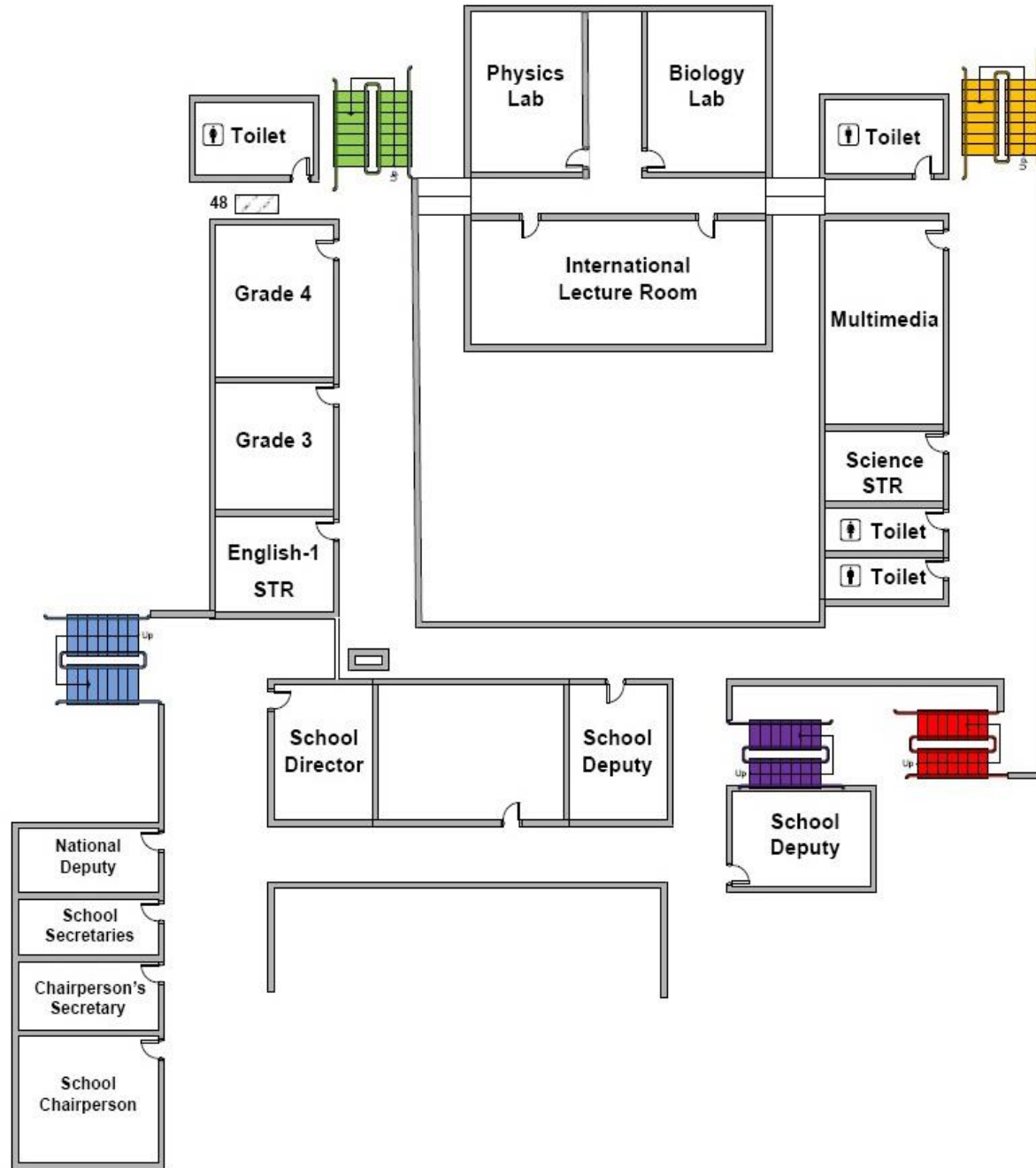
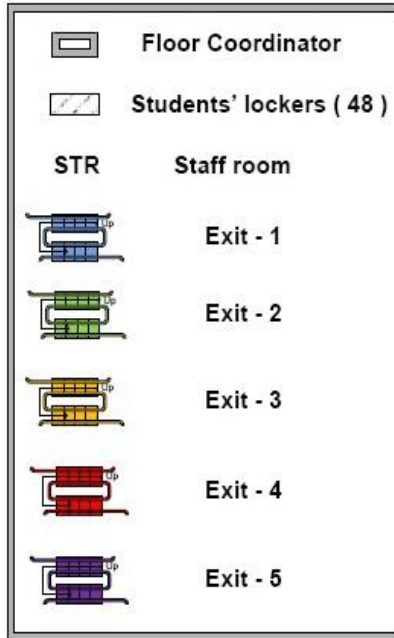
**REMAIN AT ASSEMBLY POINT
UNTIL ALL-CLEAR IS GIVEN.**

Floor plan

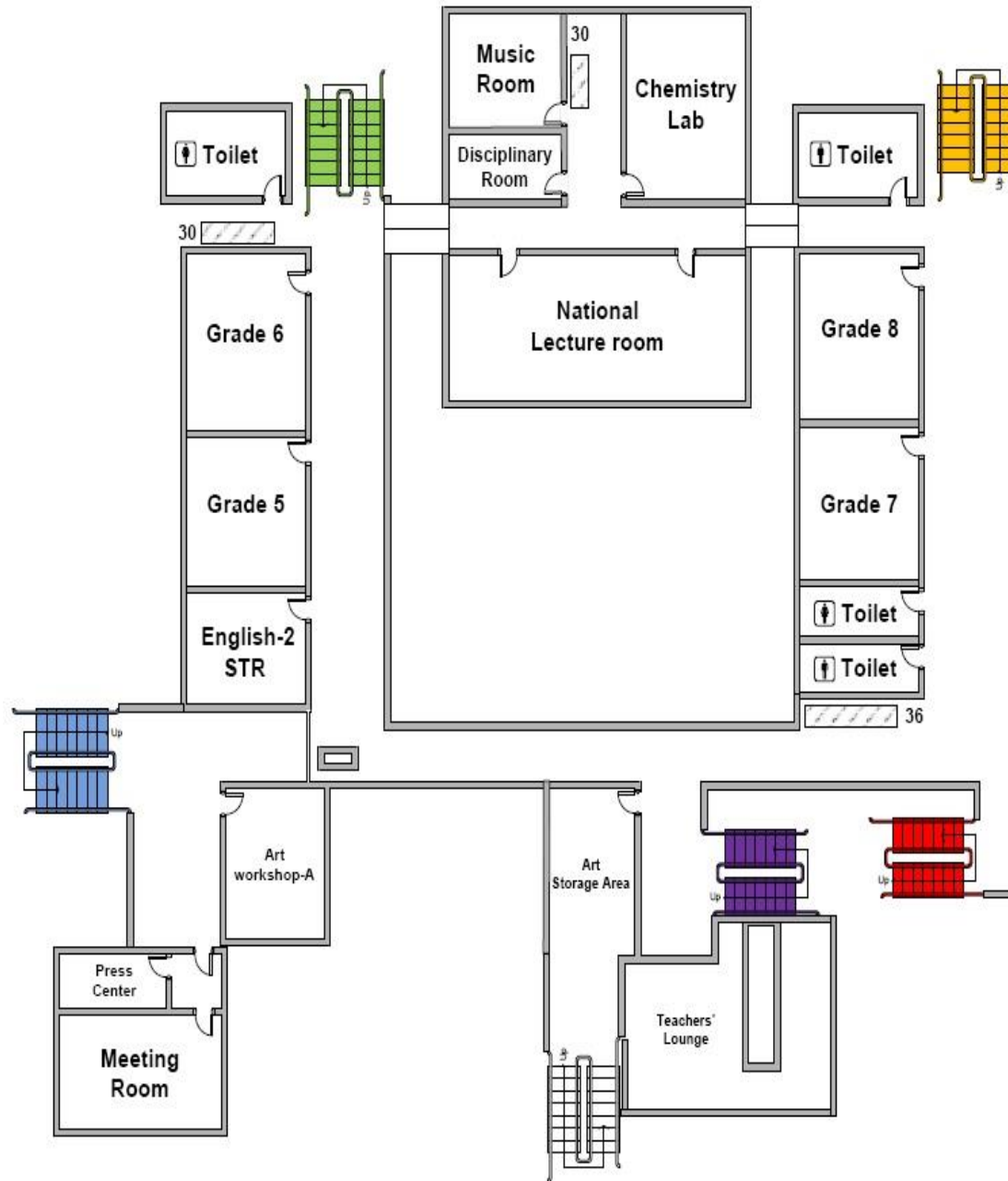
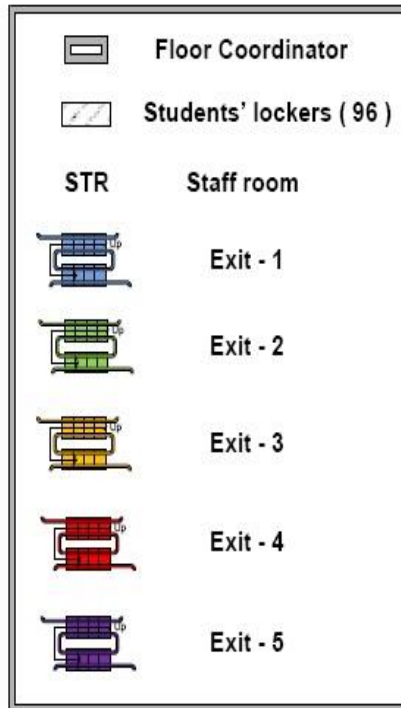
Ground floor



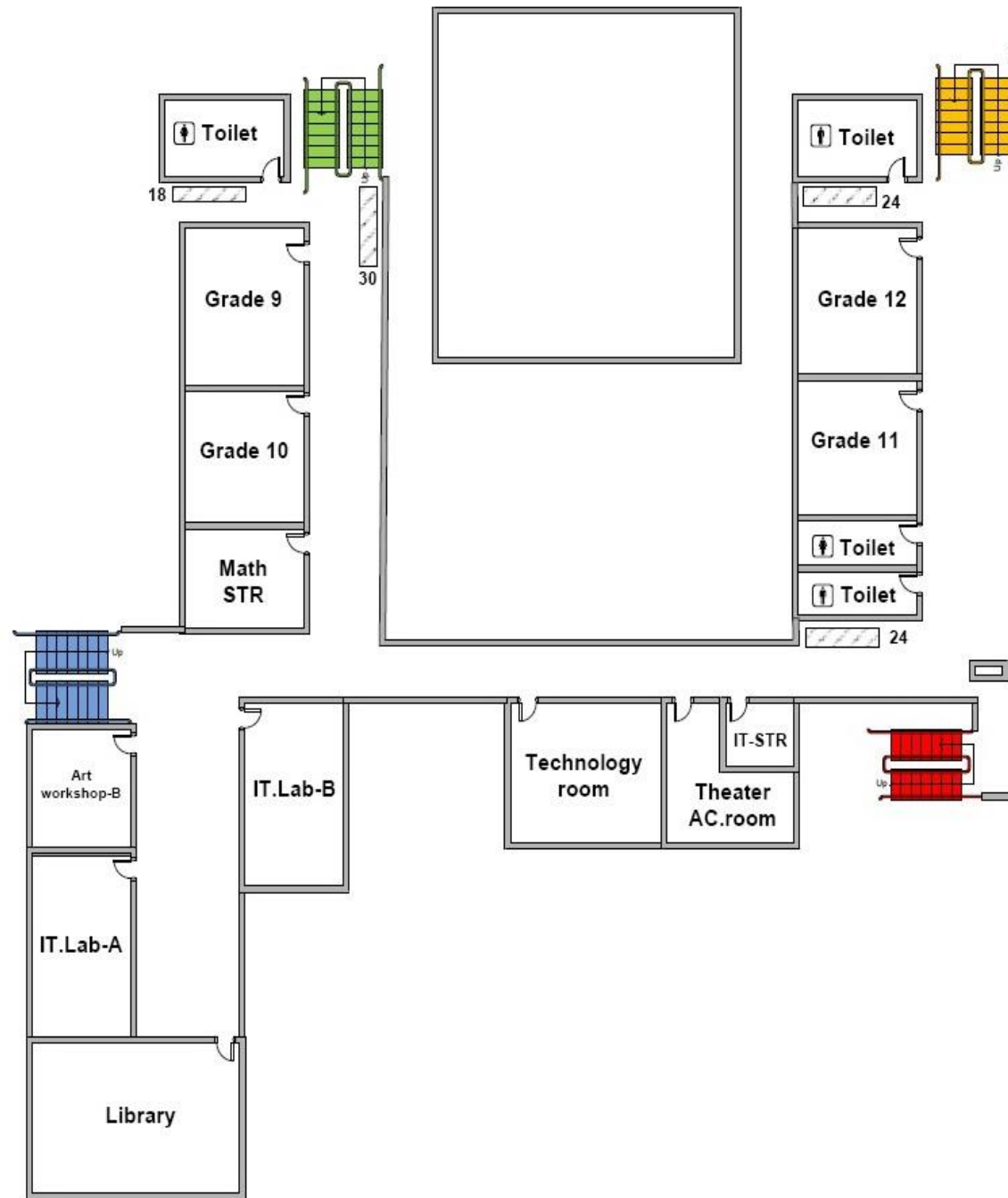
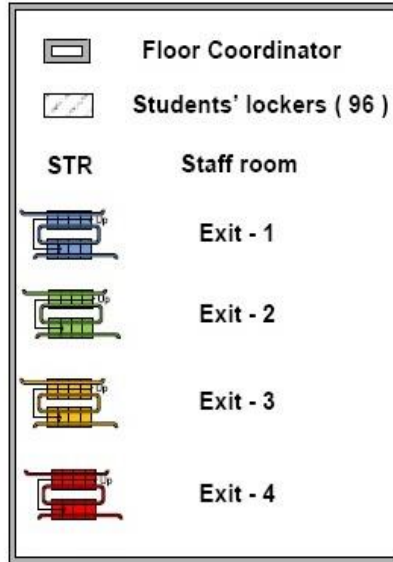
First floor




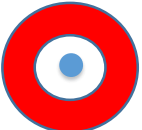

Second floor

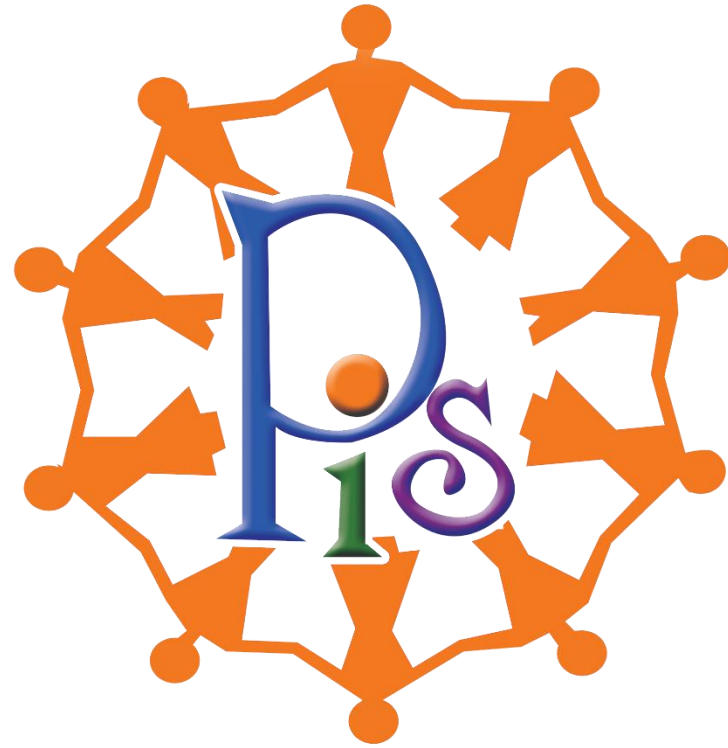


Third floor



External Danger - Signals: as follows

-  **Code YELLOW** Indicates a situation of moderate potential danger
-  **Code RED** Indicates a situation of imminent danger such as an intruder.
-  **Code GREEN** Indicates all clear. **RESUME NORMAL ACTIVITIES.**



Thank you